



جامعة دبي الطبية
DUBAI MEDICAL UNIVERSITY

M.Pharm- Clinical Pharmacy Catalog 2025-2026

"College of Pharmacy, DMU, located in the Emirate of Dubai is officially licensed from 05/05/2023 to 04/05/2026 and reaccredited with effect from 31 January 2024 by the Ministry of Education - Higher Education Affairs of the United Arab Emirates to award the postgraduate degree in the Master of Pharmacy in Clinical Pharmacy."

Contents

Haji Saeed Bin Ahmed Al Lootah (1923-2020)	4
The Founder of Dubai Pharmacy College for Girls	4
PREFACE: an insight into Dubai Pharmacy College for Girls	5
HISTORY of DUBAI PHARMACY COLLEGE for GIRLS	6
Vision and Mission	8
Accreditation and Licensure	8
Board of Trustees	9
Advisory Board – Clinical Pharmacy	10
Organizational Structure	11
1. Program Details	12
2. Admission Requirements	12
3. Student Intake and Fee Structure	15
4. MPharm (Clinical Pharmacy) Program Details	18
4.1 Basic Information	18
4.2 Program Objectives	18
4.3. Program Outcomes	18
4.4 Curriculum Requirements Credit hours (CH)	20
4.5 Graduation Requirements	20
4.6 Study Plan	21
4.7 Remedial Courses	22
4.8 Course Descriptions	23
4.9 Faculty for MPharm (Clinical Pharmacy)	26
5. Methods of Instruction	27
6. Academic Offences	29
7. Assessment	30
8. Grading System	31
9. Progress Policy Guidelines	32
10. Student Appeals Policy	32
11. Students Grievance Policy	32
12. Student Rights & Responsibilities	33
13. Education Support Facilities	34
14. Students' Support Services	36
15. Glossary of Terms	37
DPCG Academic Calendar- Academic Year 2023-2024 (1445)	Error! Bookmark not defined.
Teaching Pedagogy and Scheme of Assessment (MPharm Clinical Pharmacy)	Error! Bookmark not defined.
Clinical Clerkship & Research Project	41
Graduation Project for M.Pharm (Clinical Pharmacy):	49

Praise be to Allah who taught man what he did not know and guided His servants through knowledge to the path of piety and obedience to Him. He Himself says in the Holy Book: Only those of his servants who are endowed with knowledge truly fear Allah. (35:28). And Allah's peace and blessing be upon Prophet Muhammad who taught humanity all things good and guided it to righteousness and piety.



***H.H. Shaikh Mohammed Bin Zayed Al Nahyan
President of the United Arab Emirates***



***H. H. General Shaikh Mohammed Bin Rashid Al Maktoum
Vice President and Prime Minister of the United Arab
Emirates and Ruler of Dubai***



***H. H. Shaikh Hamdan Bin Mohammed Bin Rashid Al Maktoum
Crown Prince of Dubai***



Haji Saeed Bin Ahmed Al Lootah (1923-2020)
The Founder of Dubai Pharmacy College for Girls

Founder **Haji Saeed Ahmed Al Lootah** is famous for his diverse and successful business ventures, non-profit educational institutions, entrepreneurship, veracity as well as its profound dedication to corporate citizenship and sustainable development. His success spans across key business sectors from construction, real estate and energy conservation to financial services, applied research, ICT, education, hospitality, media and healthcare among others.

With the enduring values of education, cooperation and economy, which set the foundations of his work, Dubai Pharmacy College for Girls was established in 1992. The first pharmacy college, accredited by the Ministry of Higher Education and Scientific Research, UAE, is the result of single-minded dedication of this great visionary.

His earlier educational ventures of importance and repute are- The Islamic School for Training and Education, Dubai Medical College for Girls, Dubai Institute for Environmental Research and Dubai Medical Centre for Treatment and Research.

Thanks to his vision and leadership, Dubai Pharmacy College for Girls continues to demonstrate unique values that extend well beyond its functional benefits creating greater economic, social and environmental benefits for people in the United Arab Emirates and beyond.

PREFACE: an insight into College of Pharmacy, Dubai Medical University



Professor Sherief Khalifa
Dean
College of Pharmacy
Dubai Medical University

Dubai Pharmacy College for Girls, now College of Pharmacy, Dubai Medical University has been committed to leading in education in pharmacy and Haji Saeed Ahmed Al Lootah established offering BPharm degree since it in 1992. In recognition, our college has been accredited and licensed by the Ministry of Higher Education – Higher Education Affairs, UAE since 1998. Around the globe we have more than 1000 alumni well placed or working towards higher degree in the US, UK, Canada, India, Syria, Egypt, Sudan - this stands a testimony to all our accomplishments. It is also endowed with the Dubai Quality Appreciation Award in 2004. With increasing demands of in industries and hospitals, this is a highly demanding time for specialized pharmaceutical services

DPCG is taking privilege to commence Master of Pharmacy degree program to match the need of the hour and to avail you with best educational and research experience to entail you to be a leader in pharmaceutical profession. You are commencing your professional education at a particularly exciting time for pharmacy, and you will be in the vanguard of new developments and models of professional practice.

Over the next two years of the study, you will gain comprehensive understanding and skills required for you to succeed in your specialized career. These range from the development of drug formulations in the pharmaceutical industries through to patient-facing clinical roles in hospital, primary care and community sectors.

The modern facilities provided in the classrooms and, teaching and research labs would be a solid atmosphere for you and every aspect of the teaching and learning processes which will be continuously assessed to ensure that you are learning, and instructors are teaching appropriately. Students, with the help of faculty advisors, will prepare a *Research Project* portfolio to showcase their academic rigor and document their progress in mastering the program's educational outcomes.

Dubai Pharmacy College for Girls is proud of its tradition of friendly atmosphere. We welcome all of you who have a strong will to fulfill your dreams as competent and successful healthcare providers.

I wish you good luck with your studies.

HISTORY of DUBAI PHARMACY COLLEGE for GIRLS

The great visionary and philanthropist Hajj Saeed Bin Ahmed Al-Lootah founded Dubai Pharmacy College for Girls in September 1992. It was created under the umbrella of Dubai Institute of Environmental Research, with the goal of establishing itself as a state-of-art institute in pharmaceutical education and research.	
1992	Dr. Mizra Beg, Director (DIER) was in charge. Dr Saeed Ahmad Khan was appointed as the Head of Educational Unit.
1992-'93:	The first batch of 27 students (16 girls and 11 boys) were enrolled.
1993	Prof. Fawzi Taha Ktob from Alexandria University took charge as the Dean.
1994-'95:	To provide internship to students DPCG tied-up with Dubai Govt. Hospitals and Julphar Pharmaceutical Industry; for an internship program for the students.
1996	April: Submission of the Form-A to the Ministry of the Higher Education and Scientific Research for the Accreditation process.
1996	October: Prof.J.S. Qadry was appointed as the Dean of the College.
1996	December: Graduation of the First Batch of Pharmacists.
1997	October: A team of experts from U.S.A visited the College to evaluate various facilities. A report was submitted to MOHE&SR.
1998	December: Got the approval and accreditation from the Ministry (MOHE&SR) as per its decree No (151) of 1998. The decree has authorized the College to award its graduates an approved degree of B.Pharm. Along with accreditation and deemed University status.
2001	February: Delegates from MOHE&SR revisited the College. The encouraging report was given. They also stressed that the College should start a Pharm.D.Degree program.
	August: Prof. Sobbi Ali Said took over as Dean
	-Dr. Saeed Ahmad Khan was appointed as Chief Academic Officer
	-Revised and updated syllabus and curriculum.
2004	Awarded the Dubai Quality Appreciation Award for being the Best Teaching Institute in the UAE.
2007	February: Dr. Saeed Ahmad Khan was appointed as the Dean.
	Initiated the open lecture series 'Pharmatalk- Share and Inspire', providing a platform for sharing best practices.
	Introduced advanced courses; Pharmacogenomics, Pharmaceutical Technology, Instrumentation Techniques, Clinical Testing Methods, Alternative and Complementary Medicines and Clinical Pharmacy, Pharmacoepidemiology.
	Initiated Journal Alert Forum (JAF) to bring in awareness of E-Journals, which resulted in periodical seminar presentations.
2008	Renovation of total infrastructure of the College, administration offices, faculty and staff offices, lecture rooms, the computer labs with all facilities.
	Major curriculum revision was done with the inclusion of newly revised assessment methods.
	New Administration Units and Committees were formed.
	Training in Global Pharmaceutical laboratories for student of the fourth year.
2011	DPC Newsletter, a monthly publication, was initiated with the aim of sharing experience and information covering news, events, faculty achievements and creative talents of students.
2013	This year is a proud moment in the history of Dubai Pharmacy College for Girls (DPCG) as the Master's Program got initial accreditation from the Ministry of Higher Education and Scientific

	Research, UAE; for two specializations: Clinical Pharmacy, and Pharmaceutical Product Development.
2015	Certificate course introduced in Drug Regulatory Affairs
2016	Awarded the GCC Pharma Outstanding Education Award. Re-accreditation for BPharm program by the Ministry of Education – Higher Education Affairs, UAE
2017	Introduced additional Certificate courses – Pharmacy Licensing and Pharmacovigilance
2018	Selected among 10 best valuable institutes in the UAE. Masters program was fully accredited by the Ministry of education – Higher Education Affairs, UAE. Education Leadership Award for Dean, Prof Saeed Ahmed Khan New research lab and labs for MPharm were designed in the DPCG extension in an adjacent building. The infrastructure of the library was enhanced to include newly-built study rooms to facilitate student learning.
2019	MoU with University of Strathclyde, United Kingdom to provide students in DPCG to pursue postgraduate/doctoral studies. DPCG signed an MoU with Manipal Academy of Higher Education (MAHE - Dubai)
2020	DPCG signed an MoU with Universitas 17 Agustus 1945 Jakarta, Indonesia
2021	DPCG's first step to International Accreditation for the BPharm Program initiated by submitting the application and self-study report to Accreditation Council for Pharmacy Education (ACPE), USA.
2022	Dubai Pharmacy College for Girls has become an authorized EMSAT Center from 5th October 2022, by the MOE and the 1st EmsAT session was conducted on 25th October 2022.
2022	Five faculty members of DPCG among the top scientists list in the UAE "AD Scientific Index 2022"
2022	The application and self-study report of MPharm in Clinical Pharmacy submitted on 9th December 2022 to Commission for Academic Accreditation (CAA) for the renewal of the Program.
2023	The Institutional licensure was renewed successfully from CAA-MOE for a period of three years with effect from 5 May 2023 until 4 May 2026.
2023	DPCG signed MoU with Nafis program to sponsor UAE Nationals studying in the healthcare sector on July 2023.
2023	The College is heading towards International Accreditation for its BPharm Program from the Accreditation Council for Pharmacy Education (ACPE), USA with Provisional International-Accreditation (*online evaluation) status received in September 2023.
2024	The Commission for Academic Accreditation (CAA) certified that the BPharm program offered by DPCG is approved for Renewal of Program Accreditation (RPA) in recognition of its compliance with the Standards for Licensure and Accreditation. This Accreditation is valid until 31 January 2027.
2024	International-Accreditation status has been granted for the College's Bachelor of Pharmacy Degree program by the Accreditation Council for Pharmacy Education (ACPE), Chicago, USA with Accreditation valid until 31st January 2028.
2024	The Commission for Academic Accreditation (CAA) certified that the MASTER OF PHARMACY program with a Concentration in CLINICAL PHARMACY offered by DPCG is approved for Renewal of Program Accreditation (RPA) in recognition of its compliance with the Standards for Licensure and Accreditation. This Accreditation is valid until 1 September 2027.
2024	Professor Sherief Khalifa joined as the Dean of DPCG, effective March 1, 2024.

Vision and Mission

Vision

“To serve the healthcare community by nurturing competent and professional pharmacists while promoting a learning environment that fosters innovation, leadership, continued professional development and quality assurance making DPCG one of the leading institutions for the Pharmacy education in the region.”

Mission

“DPCG is committed to provide accredited pharmacy education at undergraduate and graduate level to female students based on Islamic values, advancement of pharmaceutical knowledge through research and community service in order to serve pharmacy profession, scientific community and public.”

Accreditation and Licensure

Dubai Pharmacy College for Girls offers the following degrees:

- I. Bachelor of Pharmacy
- II. Master of Pharmacy* with concentration in
 - Clinical Pharmacy

All the programs are accredited by the Commission for Academic Accreditation (CAA), Ministry of Education – Higher Education Affairs, UAE.

Board of Trustees



Haj Saeed Bin Ahmed Al Lootah (Late)
*Founder and Former Chairman
Board of Trustees*



H.E Lieutenant General Dhahi Khalfan Tamim
*Lieutenant General and the current Deputy Chief
of Police and General Security. Chairman
Board of Trustees*



Eng. Yahya Saeed Lootah
*Vice Chairman –
Board of Trustees*



Eng. Hussain Nasser Lootah
*Executive Director, SS Lootah
Group
Former Director General of Dubai
Municipality*



Dr. Mohammed Murad Abdulla
*Director, Foresight and Decision-
Making Support, Dubai Police
Member, Board of Trustees*



Dr. Wadia Mohamed Al Sharief
*Director, Medical Education and
Research Department, Dubai
Health Authority*



Dr. Fatima Sultan Al Olama
*Pediatrician, Champion of Women
and Children's Healthcare
Member, Board of Trustees*



Mr. Sultan Abdullah Bin Hada Al Suwaidi
*Chairman, Sharjah Economic
Development Department (SEDD)
Member, Board of Trustees*



Prof. Sherief Khalifa
*Dean, College of Pharmacy, DMU
Ex-Officio Member*

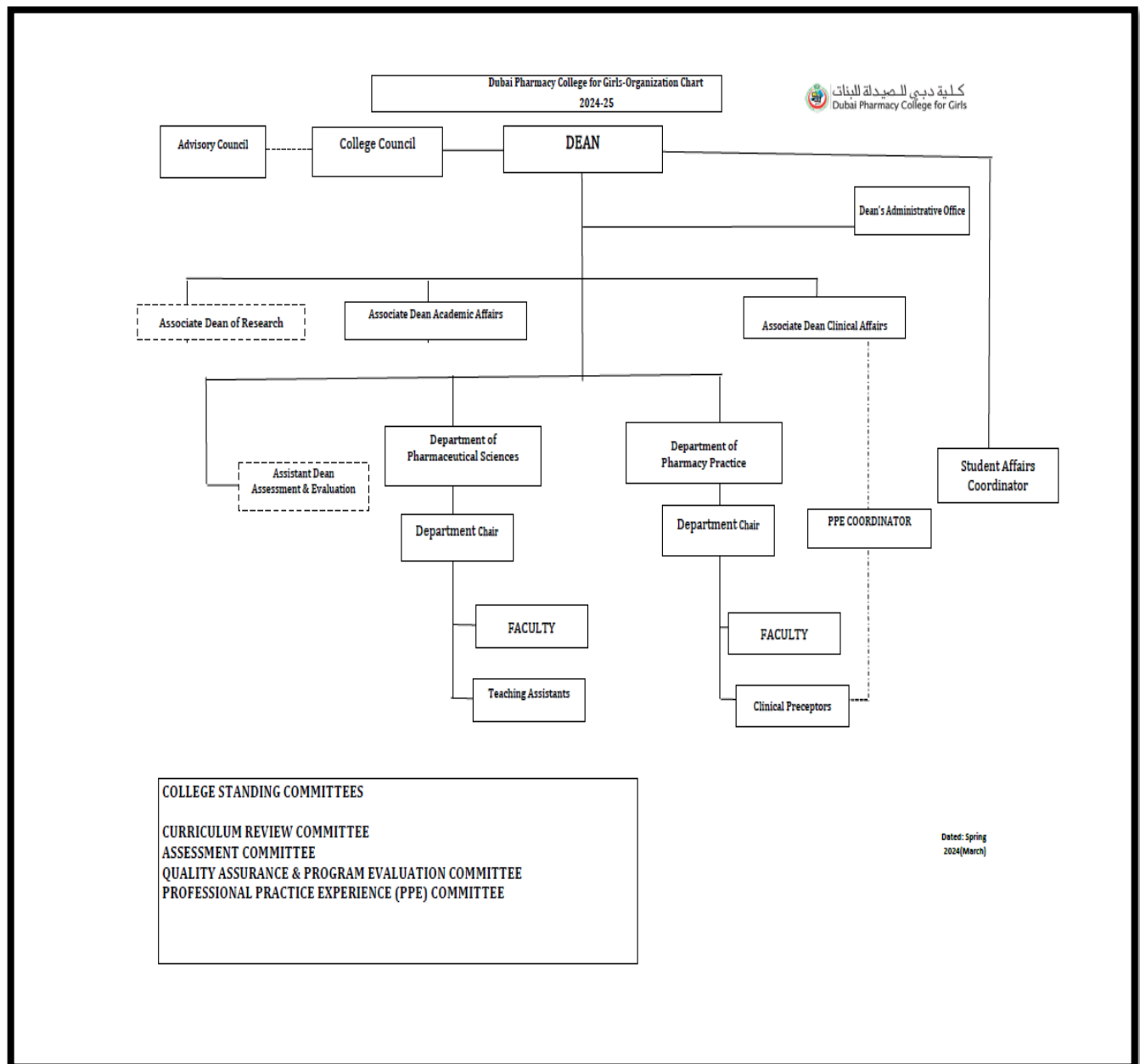


Dr. Prof. Yousif El-Tayeb
*Dean, College of Medicine, DMU
Ex-Officio Member*

Advisory Board – Clinical Pharmacy

No	Advisory Board Member names	Designation	Work Place
1	Dr. Mohamed Magoury	Director of Pharmacy Operations	The Life Corner , PureHealth
2	Dr. Waqar Ahmed	Director of Pharmacy Services	Fakeeh University Hospital, Dubai, UAE
3	Dr. Tariq Mansoor	Head Of Pharmacy	Saudi German Hospital, Dubai, UAE
4	Dr. Boshra Hassan Al Ali	clinical pharmacist/head	Fujairah primary health care, Fujairah, UAE
5	Dr. Saba Mohsen Mohamed Mohamed	Head, Medicines Department	Zayed Military Hospital, Abu Dhabi, UAE.
6	Dr. Mariam Musabeh Alghfeli	Pharmacist 1	Sheikh Shakhbout Medical City (SSMC), Abu Dhabi, UAE
7	Dr. Rayan Elamin Fadl	Medication Safety and Quality Improvement Manager	Sheik Shakhbout Medical City, Abu Dhabi, UAE
8	Dr. Omar AlSoukhni	Head of Department	Al Jalila Children's Hospital, Dubai, UAE
9	Dr. Rania Khani	Acting Head Clinical Pharmacist	American Hospital, Dubai, UAE
10	Dr. Veena Viswanathan	Clinical Pharmacist	Clemenceau Medical Centre Hospital, Dubai, UAE
11	Ahoud Rashid Juma Khalfan Al Senaidi	Clinical Pharmacist	Latifa Hospital, Dubai, UAE

Organizational Structure AY 2024-25



1. Program Details

INSTITUTION:	College of Pharmacy, Dubai Medical University, Dubai, UAE
DEGREE:	Master of Pharmacy in Clinical Pharmacy
LENGTH & MODE:	Two academic years, Full time
MINIMUM.REGISTRATION PERIOD:	2 years
MAXIMUM.REGISTRATION PERIOD:	3.5 years
Program Director	Prof. Mirza Baig

2. Admission Requirements

Admission to Graduate School is based on academic qualifications as shown in Table below. Prospective students can find information on application procedures as well as a link to the application at the college web site at www.dpc.edu. Inquiries concerning particular degree programs or courses of instruction should be addressed to the graduate program director or to the Dean.

Entry requirements	BPharm or Pharm D
Other qualifications accepted	--
Minimum average % of marks	CGPA of 3 on a scale of 4.0, or its equivalent
English Language proficiency requirements	<ul style="list-style-type: none"> • Internet Based Test (IBT) TOEFL 79 out of 120. • International English Language Testing System (IELTS-Academic) 6.0 <p>Exceptions are:</p> <ol style="list-style-type: none"> 1. A native speaker of English who has completed her undergraduate education in an English-medium institution and in a country where English is the official language. 2. An applicant with an undergraduate qualification from an English-medium institution who can provide evidence of acquiring a minimum TOEFL score of 500 on the Paper-Based test, or its equivalent on another standardized test approved by the Commission, at the time of admission to her undergraduate Program. To be eligible for this exemption you must have completed your studies no more than two years prior to the start of the postgraduate degree program for which you are applying.
Entry eligibility	Passing an interview
Study Mode	<p>Study mode for regular MPharm students:</p> <ul style="list-style-type: none"> • MPharm program requires regular attendance. Therefore, no course can be completed online. • Graduate courses are offered on weekends (Saturday and Sunday). • Graduate candidates admitted as full-time students will be offered not less than 9 credit hours and not more than 12 credit hours per semester.

	<p>Study mode for conditionally admitted MPharm students:</p> <ul style="list-style-type: none"> Conditionally admitted graduate candidates will be offered not more than 9 credit hours per semester and will have to undergo remedial classes.
--	---

Applications are initially reviewed by the college and applicants will be called for an interview. Final decisions rest with the college, which, after considering the recommendation of the department concerned, will notify the applicant of the decision.

Direct Admission

- a) The student must hold a bachelor's degree or equivalent from a recognized university with a CGPA of 3.00 out of 4.00.
- b) The degree must be in a major that qualifies the student to study has to Master's program.
- c) Applicants must achieve and EMSAT score of 1400 or IELTS 6.0 or TOEFL 79 or equivalent before their enrollment.

Conditional Admission

- a) Students with less than IELTS 6.0 or TOEFL 79 will be conditionally accepted and will be allowed to register only 6 credit hours in the first semester and should obtain at least 3 out of 4 in the CGPA.
- b) Students with a minimum CGPA of 2.5 to 2.99 on a 4 scale will be allowed to take nine credits in the first semester. They should score at least 3 out of 4 in the CGPA.
- c) Students with a minimum CGPA of 2 to 2.4 out of 4 scale shall be admitted in the first semester as follows:
 - Successfully complete a maximum of nine graduate level credit hours as remedial preparation.
 - These remedial courses are not credits for the program must achieve a minimum of 3 out 4 scale in these nine credits of remedial courses.

Transfer Admission

Dubai Pharmacy College for Girls (DPCG) accepts transfer of students from accredited College with a curriculum that is comparable to that offered at DPCG. The transfer of students is not allowed after the second semester. The following are the necessary conditions for transfer to the DPCG from other pharmacy colleges.

- Students must meet the English language proficiency requirements such as minimum TOEFL score of (79 IBT) or 6.0 in IELTS.
- DPCG requires applicants to submit their transcripts for evaluation of transferable subjects /teaching hours from previous college experiences. The student must provide a letter of application to the Dean of the College specifying reason(s) for requesting transfer and desired date of transfer.
- All applicants must provide conduct certificates from the Pharmacy College where they are currently enrolled. No student who has been dismissed from any Pharmacy College will be eligible for transfer to DPCG.
- The student transferring from another accredited college must be in a good academic standing

(CGPA of 3 on a scale of 4.0, or its equivalent) in BPharm.

5. The student must have earned a grade of "B" or better in the course. No more than six credit hours of graduate work may be transferred from another institution. The courses must be graduate level and have been taken for graduate credit at the accredited institution.
6. The Dean will make the final decision for approval of transfer after review of the transfer request.

Advanced Standing

At the moment, DPCG does not accept any form of non-degree certificates, non-credit courses or advanced high school subjects as an equivalent to any of the credit hour courses offered at any one of the DPCG accredited programs. In case a student with exceptionally advanced standing applies we will forward it to the commission for a final approval.

Recognition of Prior Learning

RPL does not apply to MPharm (CP).

Graduate Student Readmission:

Students returning from a **Leave of Absence** will need to fill out a readmission form available in the Dean's office.

Deadline for Readmission:

Readmission form must be submitted on or before the start of the term/semester.

Students returning from a **Leave of Absence** who have a tuition balance are subject to the rules regarding overdue tuition balances in place at that time. After one year, students will have to re-apply for admission.

Leave of Absence:

Students in good standing may request a **Leave of Absence**. A leave of absence allows a student to return to the same semester at any registration period for up to one year from the start of the leave without the necessity of re-applying but should fill in the Leave of Absence form. Students on scholarship who are in good academic standing will retain their award when returning to the College from a leave of absence of not more than one year. The forms for readmission are available in the Dean's office.

Add/Drop/Withdrawal from Courses

As DPCG strictly adheres to the time-table schedule, the graduate students cannot add or drop any regular courses allotted for each semester.

Withdrawal Policy

Up to the end of the 10th week of a semester, students may choose to withdraw from a course without academic penalty; however, a grade of **W** will appear on the student's transcript. Students may officially withdraw from a course up to the end of the 10th week of the semester. After the 10th week, withdrawals are no longer permitted, except by special permission of the Dean. A withdrawal form must be signed by the Dean. **Note:** All withdrawals from course(s) after the fourth week of the term are noted with a grade **"W"** on the transcript.

Online Registration:

New applicants should follow the steps below to register online:



New applicants will be shortlisted and contacted. If you have any questions regarding the system, or should you encounter problems while using the system, call the college reception during office hours.

3. Student Intake and Fee Structure

Student Intake	Minimum enrollment of 5 students not exceeding 15 students	
Fees	Total Amount/Year	Mode of Payment
Tuition	Dhs50,000/-per year (+5% VAT applicable)	Dhs25,000/- at time of admission
Hostel	Dhs15000/- to 18000/-	Four installments with tuition fees.
Transportation (+5% VAT applicable)		
Dubai (daily)	Muhaisnah/Mizhar/Mirdif/Rashidiya/Twar/Qusais/Nahda - Dhs3000/- Deira/Bur Dubai/Satwa/Karama/Umm Suqaim/Jumeirah/Barsha - Dhs4000/-	Four installments with tuition fees.
Sharjah/Ajman(daily)	Dhs 5000/-	Four installments with tuition fees.
AbuDhabi, Fujairah, Al Ain, Baniyas (weekly)	Dhs 5000/-	Four installments with tuition fees.

Refund Policy of Tuition Fees

Dubai Pharmacy College for Girls admits only a very limited number of students, so if any student after admission cancels her admission, then this will create a vacancy which could have been used by another qualified student. Therefore, the College will not refund the fees paid at the time of admission until and unless a valid reason as below is provided for cancellation of admission.

1. If a candidate is unable to secure a Visa from the UAE government during initial admission period.
2. If the guardian of the candidate faces sudden employment termination or visa cancellation.
3. If a candidate is granted a scholarship provided that it occurs after the date of fee payment.

Refund requests for the above cases should be made at the Registration office through a written request enclosing the ID card and original fee receipt. Refunds will be made after clearance of dues if any. The amount paid is construed as your booking the seat for yourself in the College. The refund policy applicable is as follows:

- If a student withdraws before the beginning of the Academic Year or during the first 10 working days of the academic year 5% (applicable on the full tuition fees) is deducted and the remaining is refunded.
- If a student withdraws after 10 to 30 working days of the Academic Year: 25% (applicable on the full tuition fees) is deducted and the remaining is refunded.
- If a student withdraws after 30 working days, there is no refund.
- Hostel and Transportation fees are refunded based on pro rata on a full monthly basis, not per day. (Month fraction is considered as a full month).
- Refunds will be processed through Cheque only to the same payer (student's parent / guardian / sponsor).

The following are non-refundable:

- Application fee and Seat reservation fee
- Full tuition fee in case of dismissal for disciplinary reasons

4. MPharm (Clinical Pharmacy) Program Details

VISION:

To reform clinical pharmacy services in this region by enhancing drug therapy outcome to the individual and the society, through extraordinary graduates of our program.

MISSION:

The mission of M. Pharm-Clinical Pharmacy Program is to develop and qualify efficient clinical pharmacist who can compete in UAE and abroad by providing enhanced pharmaceutical care benefits by working in a healthcare team with their exemplary Professional and innovative services.

4.1 Basic Information

Program title: Master of Pharmacy (Clinical Pharmacy)

Program duration: 2 years

Teaching Institution: College of Pharmacy, Dubai Medical University Dubai, UAE

Department(s) responsible: Department of Clinical Pharmacy and Pharmacotherapeutics

Delivery Site: Dubai Pharmacy College for Girls/Dubai Health Authority Hospitals, Cleveland Clinical Abu Dhabi, Iranian Hospital Dubai, EHS approved clinical sites, Saudi German Hospital, Fakeeh University Hospital, Al Jalila Children's Hospital,

Coordinator: Prof. Mirza Baig, Dept. of Pharmacy Practice

4.2 Program Objectives

Program aims:

1. Produce clinical pharmacists capable of providing specialized pharmaceutical services in hospital and other clinical environments.
2. Choose various specialized areas by the graduates to become a Pharmacotherapy specialist, based upon their area of interest during their clerkships in hospital.
3. Produce confident and knowledgeable pharmacists to work with other health care professionals.
4. To enhance the pharmacists' role as a member of the healthcare team by improving their communication, managerial, clinical and research skills.
5. To provide a pathway towards academia as a career.
6. To provide learning opportunities to enable to think critically and to further develop as an autonomous and lifelong learner.

4.3. Program Outcomes

Master of Pharmacy is a postgraduate program, designed to prepare pharmacists for the provision of high-level clinical pharmacy services to develop and demonstrate:

- A. Knowledge
- B. Skills
- C. Competencies-autonomy and responsibility, self-development, role in context

A. Knowledge: On completion of the M. Pharm. program, the graduates will be able to:	
A.1. Demonstrate specialist and comprehensive knowledge required in providing specialized Clinical services required in hospitals and other clinical environments. A.2. Comprehend the ethical, legal and quality principles of professional practice in clinical pharmacy practice.	Learning/Teaching methods Lectures, tutorials, office hours, seminars Methods of Assessment Written & Oral exams. OSCE Case Presentations
B. Skills: On completion of the M. Pharm. program, the graduates will be able to:	
B.1. Identify, analyze, deploy and utilize appropriate information in clinical case discussion and evaluate the pharmaceutical care required for the case. B.2. Critically evaluate the available literature in the field of clinical pharmacy for evidence-based medicine. B.3. Demonstrate effective project management skills. B.4. Communicate effectively orally and in writing and deploy a range of presentation techniques and strategies to present, explain and critique information within workplace settings.	Learning/Teaching methods PBL, Clerkships Research project, Assignments, Case studies, seminars, Demonstrations Methods of Assessment OSCE, Assignments, Case presentations, Problem based learning, Presentations, Dissertation evaluation & defense
C. Competences: On completion of the M. Pharm. program, the graduates will be able to:	
Autonomy and responsibility C.1. Demonstrate self-direction and originality in tackling and solving problems, and act autonomously in planning and implementing tasks at a professional or equivalent level through clerkship and research project. C.2. Demonstrate ability to use skills to make decisions in complex situations where there are several factors that require analysis, interpretation and comparison.	Learning/Teaching methods PBL, Clerkships, Research project Assignments, Case studies, online software, seminars, Demonstrations Methods of Assessment OSCE Assignments Case presentations Problem based learning, Computer Based Test, Presentations Dissertation evaluation & defense.
Self-development C.3. Practice self and continuing professional learning through reference books, published data, scientific publications and websites and attendance of seminars, workshop and conferences. C.4. Utilize and contribute to the available scientific literature in the field of clinical pharmacy and pharmacy practice.	
Role in context C.5. Deal with complex issues both systematically and creatively, make sound judgments in the absence of complete data, and communicate their conclusions clearly to specialist and non-specialist audiences. C.6. Interact with professional colleagues and demonstrate team-working and leadership abilities in various professional contexts.	

4.4 Curriculum Requirements Credit hours (CH)

First Semester: 11 CH

Second Semester: 10 CH

Third Semester: 17 CH

Fourth Semester: 17 CH

TOTAL: 55 CH

4.5 Graduation Requirements

MPharm degree will be awarded to students who successfully complete all the requirements of graduation. The requirements of the graduation are:

1. She should pass all the courses, both theoretical and practical as per the assessment and grading rules of the college.
2. She should successfully complete required clerkships in hospitals approved by college.
3. She should complete a major research project and successfully defend it in front of a panel of external and internal examiners appointed by the college.
4. She should secure an overall CGPA (Cumulative Grade Point Average) of 3 (80%) in all the above mentioned in 1, 2 and 3.
5. In all such cases, a maximum duration of 3.5 years is allowed upon recommendation of the Graduate Program Director and permission from the Dean.

4.6 Study Plan

FIRST YEAR					
I. First Semester					
Course Code	Course	Prerequisite	Contact hours/week		Credit hours
			Lecture	Case studies	
CP901	Clinical Pharmacy Practice	--	3	-	3
CP902	Therapeutic Drug Monitoring		1	2	2
CP903-1	Pharmacotherapeutics - I	--	2	2	3
CP903-2	Pharmacotherapeutics-II	--	2	2	3
Total Credit Hours					11
II. Second Semester					
Course Code	Course	Prerequisite	Contact hours/week		Credit hours
			Lecture	Case studies	
CP903-3	Pharmacotherapeutics-III	--	2	2	3
CP903-4	Pharmacotherapeutics-IV	--	2	2	3
CP904	Clinical Toxicology & Drug Poisoning	--	1	2	2
CP905	Clinical Research Methodology & Biostatistics	--	2	-	2
Total Credit Hours					10

SECOND YEAR				
Major Clerkship		Prerequisite	Duration (weeks)	Credit hours
CPC-IM 1-C	Internal Medicine 1		4	4
CPC-IM 2-C	Internal Medicine 2		4	4
CPC-AMB-C	Ambulatory Care		4	4
CPC-IC-C	Intensive Care Unit		4	4
CPC-PD-C	Pediatrics		4	4
CPC-SG-C	Surgery		4	4
Minor Clerkship Elective (Any two)			Duration (weeks)	Credit hours
CPC-PSY-E	Psychiatry		2	2
CPC-OG-E	Obstetrics & Gynecology		2	2
CPC-ID-E	Infectious Diseases		2	2

CPC-TDM-E	Therapeutic Drug Monitoring Rotation		2	2
CPC-DIS-E	Drug Information Service		2	2
CPC-TPN-E	Total Parenteral Nutrition	--	2	2
CPC-CP-E	Community Pharmacy		2	2
Research Project & Dissertation [CP-RP]		CP907	Min24	6
Credit hours (Total)				34
Total Credit				55

4.7 Remedial Courses

Drug Information Services (CP801-3 CH)

Course Coordinator: Prof. Kishore Sam

This course is designed to provide students with the knowledge and skills needed to effectively gather, manage, and communicate drug-related information to healthcare professionals, patients, and other stakeholders. This course is typically offered in pharmaceutical and healthcare-related programs and is essential for those pursuing careers in pharmacy, healthcare, or the pharmaceutical industry. It provides comprehensive training on principles and practices of Drug Information Services (DIS) in healthcare and pharmaceutical settings. It covers a wide range of topics related to the collection, analysis, dissemination, and application of drug-related information. Students will develop the expertise to provide accurate, evidence-based information on medications and their use, ensuring the safe and effective delivery of healthcare services.

Laboratory Data Interpretation (CP802- 3 CH)

Course Coordinator: Prof. Mirza Baig

This course presents the latest updates on selected LABORATORY TESTS and Diagnostic tests used in most health care facilities today. Not ALL Lab Tests will be included in this course. The objective of this text is to present pharmacists with a guide to the considerations of some of the most commonly used laboratory tests and some select diagnostic tests which help in pharmaceutical care plans.

Geriatric Care (CP803-3 CH)

Course Coordinator: Dr. Semira Abdi

This course introduces the students to the social, demographic, ethical and therapeutic issues concerning pharmaceutical products and care provided to the elderly. This course gives the students an understanding of the causes behind health issues related to elderly patients. This course helps the students to apply the principles of selecting and optimizing drug therapy for older adults with several comorbidities.

4.8 Course Descriptions

CP901: CLINICAL PHARMACY PRACTICE (3 CH, First Semester)

Course Coordinator: Prof. Mirza Baig

This course introduces to the concepts and abilities required for a clinical pharmacist in relation to interpersonal skills and their responsibilities for caring and respecting the patients' needs and beliefs. ADR reporting and documenting are also discussed in this course. The student works with and discusses real and complex patient cases with a focus on drug-related problems, rationalize pharmaceutical care plan and cost-effective analysis of medications. Pharmacist Interventions, wider public health issues, and the awareness of guidelines are studied to reflect the changes which occur in drug development and disease management.

CP902: THERAPEUTIC DRUG MONITORING (1+1 CH, First Semester)

Course Coordinator: Dr. Mariam Diab,

This course is designed to provide students pursuing a Master of Clinical Pharmacy with in-depth knowledge and skills related to therapeutic drug monitoring (TDM) of specific drugs. Students will explore the principles, methodologies, and clinical applications of TDM to optimize drug therapy, ensure therapeutic efficacy, and minimize the risk of adverse drug reactions. The course will focus on selected drugs (antiepileptic drugs, cardiovascular drugs, antimicrobials, immunosuppressant, and antipsychotics) commonly monitored in clinical practice.

CP903-1: PHARMACOTHERAPEUTICS I (2+1 CH, First Semester)

Course Coordinator: Dr. Bassam, Dr. Rizah Anwar

The aim of this course is to provide the students with comprehensive knowledge and skills related to the use of medication for cardiovascular, renal and endocrine disorders. This includes the pathophysiology, clinical presentation, goals of therapy, evidence-based guidelines and the rationale behind drug selection of drugs used. The practical emphasizes the importance of patient assessment in pharmacotherapy. Students learn how to evaluate patients' medical history, physical examination findings, and laboratory results to determine the most suitable drug therapy. They also study how to monitor patients for therapeutic response and potential adverse effects and provide patient education for different patient populations.

CP903-2: PHARMACOTHERAPEUTICS II (2+1 CH, First Semester)

Course Coordinator: Dr.Ahmad, Dr. Sahar

The aim of this course is to provide the students with comprehensive knowledge and skills related to the use of medication used for respiratory, renal, gastroenterologic disorders, infections and antibiotics surgical prophylaxis. This includes the pathophysiology, clinical presentation, goals of therapy, evidence-based guidelines and the rationale behind drug selection of drugs used. The practical emphasizes the importance of patient assessment in pharmacotherapy. Students learn how to evaluate patients' medical history, physical examination findings, and laboratory results to determine the most suitable drug therapy. They also study how to monitor patients for therapeutic response and potential adverse effects and provide patient education for different patient populations.

CP903-3: PHARMACOTHERAPEUTICS III (2+1 CH, Second Semester)**Course Coordinator: Dr. Semira Abdi, Dr. Rizah Anwar**

The Rheumatology, Neurology Disorders, and Psychiatric Disorders pharmacotherapy course is designed to provide comprehensive knowledge and understanding of the diagnosis, management, and treatment of rheumatological, neurological, and psychiatric conditions. This course integrates the three disciplines to foster a holistic approach in understanding the interplay between these interconnected fields. Throughout the course, students will engage in case-based learning, critical appraisal of clinical trials, and evidence-based decision-making exercises. They will also develop skills in medication therapy management, patient counseling, and interprofessional collaboration in the context of rheumatology, neurology disorders, and psychiatric disorders.

CP903-4: PHARMACOTHERAPEUTICS IV (2+1 CH, Second Semester)**Course Coordinator: Prof. Kishore Sam, Dr. Eman Shams**

This course aims to provide students with comprehensive knowledge and skills related to the therapeutic use of medications for the treatment of various neoplastic disorders, hematologic disorders, and immunologic diseases. The course's primary focus is on integrating pathological and pharmacological principles and therapeutic decision-making skills in the management of complex patient cases. It builds upon the knowledge and skills learned in earlier pharmacotherapy courses in the program. This involves the application of knowledge from different disciplines, including pathophysiological, pharmacology, pharmacokinetics, pharmacodynamics, pharmaceuticals, and clinical pharmacy. Case studies for continuous monitoring and identifying drug related problems when developing pharmaceutical care plans and assignment on the innovations on cancer diagnostics, management and students will be required to explore how advances in research, treatment, and healthcare practices can lead to improve patient outcomes. Oncology includes the study of the principles of combination chemotherapy, cancer immunotherapy, targeted therapy, and stem cell transplantation. It also covers the management of the most common types of cancer and special patient populations, as well as ethical considerations and future directions in cancer treatment.

The students will develop a comprehensive understanding of advanced therapeutics concepts and their clinical applications, learn about the various treatment options available for these conditions, and the rationale for selecting one treatment over another using an evidence-based treatment approach. The course may be offered in a variety of formats, including lecture-based, case-based, or problem-based learning.

CP904: CLINICAL TOXICOLOGY & DRUG POISONING (1+1 CH, Second Semester)**Course Coordinator: Dr. Ahmad, Dr. Sahar**

This course is intended to provide a comprehensive framework for students to gain a solid understanding of clinical toxicology and develop the necessary skills to assess and manage poisonings in diverse clinical settings. It will empower students with an in-depth mechanistic exploration of toxic effects of poisonous substances and the comprehensive management of poisonings caused by various agents. The major focus of the course is on their effects on the human body, selection of the best antidotes and the strategies employed in diagnosing and treating poisoned patients. Students will gain knowledge of how selected chemicals/drugs exert toxic effects during clinical Presentation, monitoring and prevention and managed clinically.

CP905: CLINICAL RESEARCH METHODOLOGY AND BIOSTATISTICS (2 CH, Second Semester)**Course Coordinator: Prof. Mirza R. Baig**

This course integrates epidemiological and biostatistical techniques, emphasizing applications to clinical research (including study design, bias and confounding, hypothesis testing, confidence intervals, sample size calculations, and introduction to parametric and nonparametric tests). Students will gain practical skills

in developing a research project and in carrying out data analyses. This course helps the students develop the writing skills of research proposals, reports, thesis and articles in international standards. The course familiarizes the students with using a statistical package and gives them the skills needed for effective data management, data manipulation, and data analysis at a basic level. The course will develop fundamental skills in using a statistical package through classroom demonstrations and independent lab. This helps the students get acquainted with different research strategies and identify potential research plans that will help them in their future research projects.

Clinical Clerkships (28 CH, Third & Fourth Semester)

Clinical clerkship is for 28 weeks each during third and fourth semester, during which students will be assigned primarily to clinical rotations in different hospital departments of DHA, DOH, MOHAP approved facilities. Each student's experience will include total four weeks each on Internal medicine I & 2, Ambulatory Care, Pediatric care, Intensive Care, Surgery, and a two-week block on any two of the following Selection:

- Psychiatry
- Drug Information Service
- Obstetrics & Gynecology
- Infectious Disease
- Therapeutic Drug Monitoring
- Total Parenteral Nutrition
- Community Pharmacy

Research Project & Dissertation (6 CH, Third (3CH) & Fourth (3CH) Semester)

After successful completion of didactic courses in year one in Dubai Pharmacy College for Girls (DPCG), Students are required to go for clinical clerkship rotation in Hospitals in Year two. During their training, students are required to conduct publishable research for a minimum of 12 weeks in clinical, hospital or community related topics. The research project must exhibit original investigation, analysis and interpretation. All the senior academic staff of the Clinical Pharmacy and Pharmacotherapeutics department will be involved in supervising the M. Pharm Clinical pharmacy postgraduate students in their research as part of the curriculum. Students are required to prepare a proposal for their research/review topic. If the project involves interaction with the patients or patient data, then they are required to apply for institutional ethical approval in DPCG. They are also required to get an approval from DHA/MoH, if the data collection site is in DHA/MOH hospitals. Students utilize hospital databases and library databases to conduct the research/reviews. Students must submit the report at the end of Clerkship training and have to do final presentation of the research to fulfill the requirement of Master of Pharmacy (Clinical Pharmacy) program.

4.9 Faculty for MPharm (Clinical Pharmacy)

Faculty	Degrees	Institution	Year
Prof. Mirza Baig Head, Clinical Pharmacy and Pharmacotherapeutics Professor in Clinical Pharmacy	PhD (Clinical Pharmacy)	University Science Malaysia	2011
Prof. Kishore Gnana Sam Professor in Pharmacy Practice Clinical Pharmacy Consultant in DMU Hospital	PhD (Pharmacy Practice)	Manipal University of Higher Education, India	2009
Dr. Semira Abdi Beshir Associate Professor in Clinical Pharmacy	PhD (Clinical Pharmacy)	University of Malaya, Malaysia	2016
Dr. Doaa Kamal Assistant Professor in Clinical Pharmacy	PhD (Clinical Pharmacy)	IIUM, Malaysia	2019
Dr. Mariam Jihad Diab Lecturer	B.Pharm, PharmD, PGY1, BCPS	University of Sharjah UAE University	2023
TEACHING ASSISTANT			
Dr. Eiman Shamseldin Assistant Lecturer in Clinical Pharmacy	MPharm (Clinical Pharmacy)	Dubai Pharmacy College (UAE)	2016
Dr. Rizah Anwar Assadi Clinical Preceptor	B.Pharm, PharmD, BCPS	Gulf Medical University (UAE)	2016
Dr. Sahar EL Najjar	B.Pharm, MSc, BCIDP, BCNSP	Gulf Medical University (UAE)	2020
ADJUNCT FACULTY MEMBERS			
Dr. Waqar Ahmed	Adjunct Faculty, Department of Pharmacy Practice		

Faculty	Degrees	Institution	Year
PharmD, Mpharm-Clinical Pharmacy, MBA			
Dr. Tariq Mansoor B.Pharm, PharmD	Adjunct Faculty, Department of Pharmacy Practice		
Dr.Suhaila Mohammed Shareef Alawadhi PhD Clinical pharmacy, Curtin University of Technology, Australia	Adjunct Professor, Department of Pharmacy Practice		
Ms. Hajar M. Pharm Executive			

5.Methods of Instruction

The classrooms at DPCG are equipped with updated technologies such as interactive white board, seminar aids, speaker, and clickers. The laboratories at DPCG are well equipped with latest equipment and instruments in performing Lab work and conducting research.

Different methods used in teaching and learning during the program:

Didactic Courses

Didactic courses will be taught through different strategies such as Lectures; laboratory classes; tutorials; problem-based learning, self-directed learning, assignments, and seminars.

Seminars

All the students are required to participate in their respective specialization's seminar program. The graduate faculty members for respective specialization will grade seminars courses. The grade will be assigned based on the quality of the student's seminar presentation and their attendance throughout the semester. Faculty and graduate students will complete an evaluation sheet for each student's seminar so that the student presenter can also receive specific comments on presentation style and content.

Problem Based Learning (PBL)

In PBL, students engage in complex, challenging problems and collaboratively work toward their resolution. Students spend a great deal of time discussing the problem, generating hypotheses, identifying relevant facts, searching for information, and defining their own learning issues. This fosters collaboration among students, stresses the development of problem-solving skills within the context of professional practice, promotes effective reasoning and self-directed learning, and is aimed at increasing motivation for life-long learning.

Self-directed learning

Self-directed learning is fostered by library services providing an extensive range of textbooks and access to electronic journals and other online resources.

Simulation

Pharmacy Simulator is a fully 3D simulated learning environment for students. It navigates a range of realistic patient encounters and helps to learn from detailed feedback. Simulation learning involves identifying problems; explore and prioritize potential strategies; and design, implement, and evaluate a viable solution.

Role-played scenarios or “standardized patients” – where the student interacts with either a staff member or another student to perform a mock patient encounter. The student is assessed by an observer or a patient actor. These role plays help the students to prepare for **Objective Structured Clinical Examination (OSCE)**, which is a method of student assessment to evaluate pharmaceutical and clinical skills.

Office Hours

Office hours are available where there is a face-to-face exchange of information between students and course coordinator/instructor. Students can clarify their doubts which they feel reluctant to speak up in class.

Dissertation

Third and Fourth semester of the program are devoted to dissertation work. The student's research supervisor holds the primary responsibility for providing the appropriate guidance and counsel essential to the scholarly development of the student.

Clinical Clerkship

During third and fourth semester of MPharm (clinical pharmacy and pharmacy practice), students will be assigned primarily to clinical rotations in different hospital departments of Dubai Health Authority (DHA) approved facilities supervised by clinical preceptors.

6. Academic Offences

Students must share the responsibility for creating and maintaining an atmosphere of honesty and integrity. Students should be aware that personally completing assigned work is essential to learning. Students who are aware that others in a course are cheating or otherwise committing academic dishonesty have a responsibility to bring the matter to the attention of the faculty.

Academic dishonesty includes,

- **Plagiarism:** *The adoption or reproduction of ideas or words or statements of another person without due acknowledgment.*
- **Fabrication:** *The falsification of data, information, or citations in any formal academic exercise.*
- **Deception:** *Providing false information to an instructor concerning a formal academic exercise—e.g., giving a false excuse for missing a deadline or falsely claiming to have submitted work.*
- **Cheating:** *Any attempt to give or obtain assistance in a formal academic exercise (like an examination) without due acknowledgment.*
- **Sabotage:** *Acting to prevent others from completing their work. This includes cutting pages out of library books or willfully disrupting the experiments of others.*

Academic Misconduct include,

- a) The actual or attempted tampering or misuse of academic records or materials such as transcripts and examinations.
- b) *Stealing, buying, or otherwise obtaining all or part of an unadministered test or academic exercise.*
- c) *Selling or giving away or engaging in bribery to get all or part of an unadministered academic exercise or any information about it.*
- d) *Changing or altering a grade book, test, or other official academic records of the College.*
- e) *Entering an office without authorization for the purpose of changing a grade or tampering in any way with grades or examinations.*

Instances of academic dishonesty and misconduct will be reported to the Dean. The Dean will form a Disciplinary Committee comprising of senior faculty members of the College who will investigate the type of academic honesty and misconduct committed by the student. Depending upon the level of each mentioned above the penalty will be imposed by the Disciplinary committee which is subjected to Dean's approval. The decision of the Dean will be final. The report of academic dishonesty or misconduct will be filled in the student's advisory file.

Penalties that can be imposed by the Disciplinary committee include in the case of taught modules:

- Setting aside the component or assignment concerned and requiring you to complete it as if for the first time.
- Failure of the component. You will be reassessed, and the mark capped if appropriate and not disproportionate in effect.
- Failure of the component and the module. You will be reassessed in the module.
- Expulsion, to incorporate failure of any and all assessments or examinations taken during that session.
- Failure of that academic year (or specified part thereof) and the student to retake its assessments, with or without attendance.
- No marks to be awarded in relation to the specific material which is the subject of the academic offence (thus leading to a reduced overall mark for the piece of course work, dissertation, examination question or examination script in which the specific material appears).
- A mark of zero for the entire piece of course work, dissertation, examination question or

examination script in which the academic offence has occurred.

- A mark of zero for the entire course in which the academic offence has occurred.
- Award a mark of zero for all the assessments in the semester.
- award a mark of zero for the whole year.
- require the student to take reassessments (as a result of being awarded zero marks) in the following session before being allowed to progress or complete their course.
- require the student to enroll on courses in which they need to take reassessments (as a result of being awarded zero marks) in the following session before being allowed to progress or complete their course.

In case of research work:

- Require a research student to resubmit a dissertation.
- Require a research student to register for a period of supervision before being allowed to resubmit a dissertation.
- Withdraw the award of a degree or other qualification from and issue an amended transcript.

7. Assessment

Assessment on the MPharm degree program is a mixture of formative assessments (in form of coursework) and summative assessments (written & practical examinations).

Didactic Course Assessment:

Each taught course is assessed by 30-40 per cent coursework, 60-70 per cent exam (mid-term exam, final written, and lab exam) with exceptions for the courses required different evaluation format.

The coursework mark is derived from a series of assignments, which assess your ability to synthesize information from various sources into reasoned reports. Coursework varies from course to course and comprises a mix of Practical write-ups, Patient profiles, written reports and essays, small group projects, oral presentations, quizzes etc. Course coordinator will provide Coursework submission guidelines & grading criteria (usually in the form of rubric).

Quiz is scheduled during the semester and final written & PBL examinations are scheduled at the end of first and second semester. Exams are normally closed book, though a calculator is permitted in some exams. In order to assess all learning outcomes, all the questions are compulsory in exams.

Exams usually combine MCQ section, short answers, and longer essay-type questions.

In OSCE, Candidates rotate through several stations on a timed basis. At each station, the candidate faces a simulated task and has to perform specific functions. Both interactive and non-interactive stations are used. Trained examiners are employed as simulated patients in interactive stations evaluating the exam using a marking key that is standardized. Non-interactive stations use written responses for a given case situation within the stipulated time. Interpersonal and communication skills, professional judgment, skills of resolution, etc., may be best assessed through a well- structured OSCE in comparison to oral examinations, multiple choice tests and other methods of assessment.

Dissertation & Defense Assessment:

The assessment of the dissertation work is based on dissertation and defense at the end of the fourth semester. Dissertation is assessed based on the dissertation and defense with 60% and 40% marks respectively.

Clerkship Assessment:

Clerkship is assessed based on clerkship evaluation (continuous) and final evaluation (case presentation and written report) with 60% and 40% marks respectively.

8. Grading System

Grading at the graduate level is intended to offer feedback to students on their performance in a given course, including once students reach the dissertation and dissertation stage. Faculties are encouraged to specify course requirements and grading expectations for students. Students are assigned grades (letters) for each course, which reflects the student's achievement in the course. The minimum grade for passing a course is letter (C) and grades are written in letters according to the following table:

Range of Marks	Grade Point	Evaluation	Grade Symbol
95 - 100	4	Outstanding	A+
90 - 94.99	3.75	Excellent	A
85 - 89.99	3.50	Very Good	B+
80 - 84.99	3.00	Satisfactory	B
75 - 79.99	2.50	Unsatisfactory	C+
70 - 74.99	2.00	Unsatisfactory	C
Below 70	Failed	Failed	F
Administrative Codes			
-	Incomplete		I
-	Withdraw		W

Computation of the Cumulative Grade Point Average (CGPA) and Grade Point Average (GPA)

The GPA is calculated by multiplying the grade of each course by the number of its credit hours and dividing the total by the number of total credit hours taken in a semester. The CGPA is calculated by multiplying the grade of each course by the number of credit hours and dividing the total of all courses by the number of total credit hours taken for all semesters. Both GPA and CGPA are rounded to the nearest decimal units. GPA and CGPA are calculated according to the following formula:

GPA =
$$\frac{\text{Total (credit hours per course x grades received per course) for all courses taken in one semester}}{\text{Total credit hours for all courses taken in one semester}}$$

CGPA =
$$\frac{\text{Total (credit hours per course x grades received per course) for all the courses taken in all semesters}}{\text{Total credit hours for all the courses taken in all semesters}}$$

GPA / CGPA	Evaluation
4.00-3.90	Outstanding
3.89-3.75	Excellent
3.74 - 3.50	Very Good
3.49 - 3.25	Good
3.24-3.00	Satisfactory
Less than 3.00	Unsatisfactory

Incomplete Grades

A student who is unable to attend the final exam of any course because of extenuating circumstances such

as serious illness, accident or death of a family member during the final examination period seeks an incomplete grade "I" for the course. **Teaching Pedagogy and Scheme of Assessment appended**

9. Progress Policy Guidelines

Satisfactory Progress

- A student must maintain a semester GPA of 3.00 to be considered making satisfactory progress.

Probation

- Students who fail to achieve GPA of 3.0 (80%) in taught semesters (first and second) will be put on probation and will be allowed to appear in the supplementary exams held in February and September each year for the first and second semester. Students need to repeat the courses with grades lower than C. If she again fails to obtain a GPA of 3.0 (80%), then a second and last attempt will be given. Failing to improve the grades even after repeating the course(s) will lead to the dismissal from the program.
- Students are allowed to take the second semester on condition that no prerequisite courses have grades lower than C. No students are promoted to second year (dissertation work and/or clinical clerkships) unless she secures minimum GPA of 3.0 in both first and second semester.
- Students who fail to secure at least 80% marks in clerkships have to repeat the respective clerkship during the next six months. If the student again fails to secure at least 80% marks in clerkship, she will be withdrawn from the college.
- Students who fail 80% marks for their research project will not graduate. However, the student has the option to revise and resubmit a failed dissertation. If the student does not contact Graduate Program Director requesting to revise and resubmit the dissertation within the designated 4 weeks' time period or, once approved to revise the dissertation, does not re-submit the revised dissertation by the 6 months deadline, the dissertation will be deemed to have failed, and the student will be withdrawn from the university. Should the re-examination fail to pass the dissertation, the dissertation will be deemed to have failed the examination process and the student will be withdrawn from the college.

10. Student Appeals Policy

Every student has the right to put across her appeal within fifteen days. The appeal is addressed to the Dean. If it is not resolved properly then the student can appeal to higher authorities of the College Administration. The decision given by them will then be considered as the final decision. Appeals are limited to requests to continue in the MPharm program after being dropped from the program for academic reasons and dissatisfied course grades.

11. Students Grievance Policy

Informal Resolution:

Any student in DPCG who believes that she has been treated inequitably is encouraged to resolve the matter informally. The student should first talk with the person or group at whom the grievance is directed in an attempt to resolve the issue informally.

Grievance Procedure:

The grievance procedure is described below.

1. To initiate the formal grievance procedure, the student must submit her grievance, in writing, to the Dean of DPCG.
2. The written grievance shall include:
 - a. a statement that the student wishes a review of the situation by a Grievance Committee.
 - b. the identification of the person or group at whom the grievance is directed.
 - c. the specifics of the perceived inequitable treatment.
 - d. evidence in support of the student's belief that she has been treated inequitably.
3. A grievance must be initiated no later than 15 calendar days from the time the student knew or could reasonably have been expected to have known of the circumstances giving rise to the grievance.
4. After receiving the grievance, the Dean will study the case with the Disciplinary Committee of the College.
5. After inquiry, the report shall be notified to the student about the action on the grievance and the grounds for the action taken.
6. If the grievance is not resolved properly then the student can appeal to higher authorities of the College Administration. The decision given by them will then be considered as the final decision.

12. Student Rights & Responsibilities

Statement of Student Rights and Responsibilities

Every student who enrolls at DPCG has a right to a student-centered education, research and services. Students should positively contribute to the safe learning environment by maintaining high standards of integrity and academic honesty at the same time familiarizing themselves with and adhere to all policies and regulations of the College.

Student Rights

For a registered student in Dubai Pharmacy College for Girls the rights are:

1. To obtain pharmacy education according to a well-established educational program and in a suitable educational environment.
2. To attend theory and practical classes regularly and to participate in scientific discussions held in the class as directed by the faculty.
3. To participate in all student activities sponsored by the Student Union.
4. To benefit from facilities offered by the College such as library, hostel, transportation and others.
5. To get the identity card issued annually from the College after payment of its fees in order to prove that she is a student in the College.
6. To appear in all examinations and evaluations conducted according to the regulations of the College.
7. To get health care facility in case of emergency and first aid only. The College will not be responsible for the expenses of treatment in any case and only transportation can be provided to and from medical clinics in Dubai.
8. To get social care services offered by the College.
9. To have a residence visa sponsored by the College for hostel students as per the rules. The student will bear all expenses for her residence visa.
10. To get the following certificates from the College:
 - a. An annual certificate to prove that she is studying in the College.
 - b. A certificate to prove her academic level which she obtained as per the College records.
 - c. A certificate for the expenses required for her college study.

- d. A certificate for her good behavior and discipline in the College
- e. A graduation certificate after she fulfills all the requirements needed for graduation as per college rules.
- f. A release certificate from the College

Note: All the certificates mentioned above in (10 a to f) should be issued as per the College rules and according to the requirements of the student. The first copy of all certificates issued will be free of charge. If the student needs another copy, then it will be given by charging a nominal fee fixed by the College. But photocopies (like the original) of certificates will be given free of charge.

Student's Responsibilities

The duties of the students are:

1. To do her best to achieve the goals set by the College as mentioned in the regulations of the College.
2. To do her best to achieve a high level of scientific and educational standard. To achieve the desired level, she should not hesitate in taking help from the administration, the Dean and staff members of the College so that there is no hindrance in her way.
3. To follow all the rules and regulations of the College for academic and scientific activities.
4. To participate positively in evaluating the College development and performance by giving advice and written suggestions to the College administration in the questionnaire annually or by other means.
5. To handle all the properties of the College like instruments, equipment etc., carefully.
6. To be cooperative in adopting all the College principles especially the following:
 - (a) To wear modest clothing.
 - (b) To maintain good relationship with her colleagues
7. To inform the College administration or the Dean about misbehavior or any mistakes committed by any student, which may give a bad reputation to the College.
8. To pay the fees regularly as required by the College.

13.Education Support Facilities

COLLEGE BUILDING

The College building, on the ground floor has five laboratories, a model pharmacy with a drug information center, administrative and faculty offices, a meeting room and a reception section. On the first floor, are housed three laboratories, four lecture rooms, student's union office, students' common room, and chemical and glassware store. The animal house is located in a building adjacent to the College.

Besides the above facilities, the College is supported by a Machine Room (Industrial unit) situated in Lootah's Educational Campus for conducting training and practical in Pharmaceutics-I & II and Pharmaceutical technology courses.

LABORATORY AND INSTRUMENTATION FACILITIES

DPCG possesses well-equipped laboratories for each discipline. There are eight laboratories in the College premises equipped with scientific apparatus and equipment required for practical and scientific investigations. Some laboratories are in Dubai Medical College and are common to both the Colleges. The laboratories are:

Dubai Pharmacy College for Girls	
Ground Floor	First Floor
Instrumental Analysis Laboratory	Research Laboratory
DPC Extension	Dubai Medical College
Pharmacy Practice Laboratory	Microbiology Laboratory
OSCE, simulation Lab	Anatomy Laboratory
Advance Research Laboratory	Biochemistry Laboratory
	Pathology Laboratory
	Physiology Laboratory

BIOSTATISTICS LABORATORY

Students have access to the Biostatistics laboratory situated in the adjacent building to DPCG equipped with computers and which have licensed software IBM SPSS 29 integrated.

AUDITORIUM

A well-furnished auditorium, located in DMCG, is spacious and suitable for any cultural occasion. It has become a regular venue for all social and cultural activities of DPCG.

LIBRARY

The library is situated in the adjacent building. Students have access to computer terminals to search on-line catalogs, databases, and other information systems. The library is also equipped with photocopying machines. Look out for library updates on the LMS platforms and college websites.

Opening hours:

Monday- Thursday	7.30 am – 8.00 pm.
Friday	7.30 am – 12.00 pm.
Saturday & Sunday	10.30 am – 3.30 pm.

LEARNING MANAGEMENT SERVICES

As a member of DPCG, students will have access to Learning Management System (LMS). At DPCG the LMS is managed by D2L, an integrated set of tools designed to support e-learning activities. Students are encouraged to use the LMS platform to gain access to teaching, learning and assessment activities.

COMPUTER LABORATORY

The Computer Laboratory is well equipped with adequate facilities. The I.T. department provides technical support throughout the year to faculty, administrative staff and students. The laboratory which is well is freely available for use. It is monitored by well-qualified staff to render help and assistance.

DRUG INFORMATION CENTER (DIC)

The Drug Information Center has been established along with Model Pharmacy in the College to acquaint the students with the role of DIC for answering questions of health care team and also to acquaint them with the needs required to initiate self-community pharmacy or hospital pharmacy DIC. It also provides information to students on pharmaceutical or medical topics which help them to write projects, essays, review articles for seminars and research.

The DIC of the College has thirty-three computers, internet, primary literature, CD-ROMS and also reference

books like USPDI, Martindale, PDR and Internal Medicine, and BNF.

ACCOMMODATION FACILITIES

DPCG provides hostel facility for students who apply for it. The hostel is close to the College. It has well-furnished bedrooms, a dining room, study room and all the required facilities. Besides these facilities, internet connection is available in each room to aid them in preparing their notes and seminars. On each floor of the hostel there is a provision for praying and a gymnasium club. Students can obtain advice on accommodation from the hostel Supervisor.

HEALTH CARE FACILITIES

The College arranges to provide health care facilities to students living in hostels. DPCG has a contract for health care with its sister organization Dubai Specialized Medical Centre.

STUDENT COUNSELING SERVICES

Many students sometimes experience personal, emotional and social difficulties and may need counseling or support. DPCG provides students with counseling services through a trained student counselor who helps them to come up with a wide variety of student matters.

TRANSPORTATION FACILITIES

DPCG has special minibuses for transporting students from Sharjah, Ajman, Dubai and hostels. These buses are fully air-conditioned and quite comfortable. They are used for field trips and educational tours too.

MOSQUES

The College has mosques inside its campus for faculty, staff and female students which sustains the Islamic atmosphere in the College.

CAFETERIA

The cafeteria adjoining the College is spacious and hygienic. It offers food and beverages of students' choice. Thus, it's a rendezvous for students to relax and enjoy during breaks.

RECREATIONAL FACILITIES

In the campus there is a swimming pool, basketball court and gymnasium club. These facilities help the students in maintaining proper physical fitness.

BOOKSHOP

There is a bookshop in the College which sells textbooks at subsidized rates of various subjects taught in the College. The bookshop also provides services on photocopying at a minimal charge.

14. Students' Support Services

STUDENTS COUNSELING SERVICES

DPCG provides students with counseling services through a trained student counselor. She provides personal counseling to the students concerning their personal, social and moral problems, which may cause hindrance in the way to the students' success. Personal counseling to students is provided by prior appointment with the Counselor during the College working hours. Periodically, group counseling sessions are also arranged in each academic year. The announcement of such sessions, giving the time, date and venue, is made via the college bulletin boards. Make it a habit to attend these counseling sessions on the due dates.

ACADEMIC ADVISING AND MENTORING

Students are allotted faculty members for academic advising / mentoring. The faculty-Advisor who is assigned to a study-group of students; guides in matters pertaining to their study plan, student development, the curriculum and other academic affairs. The advisor helps the student to organize her study plan, supervises its implementation, and assists her in overcoming any difficulties related to it.

Faculty-Advisor identifies students making unsatisfactory progress in each class and remedial classes are arranged to improve their GPA. He/She also advises the student about the introduction of a credit hour system and its requirements for graduation to obtain a Degree in Pharmacy. Faculty Advisors will maintain a student record based on student's dress code, attendance in classes, academic performance (GPA/ CGPA) and conduct in college. They also provide information about programs, services, facilities and involvement opportunities that support academic success and lifelong learning, which facilitate responsible life choices, and promote awareness of self and community. It has a specific mission but one common goal: to provide academic advising, outreach and support.

STUDENTS CAREER PLANNING SERVICES

DPCG provides career counseling to its students regarding career information and planning, career development, testing and prospective job placement. DPCG also provides assistance to develop different skills necessary to start a career in various pharmaceutical settings.

Career Guidance sessions at DPCG are provided to the 4th year BPharm and 2nd year MPharm students on individual basis with prior appointment with one of the personnel; Dean, Head of Alumni Affairs / Head of Professional Practice Experience Unit. They guide the students about the availability of the opportunities to help them decide on their future plans. They will serve to ensure the:

1. Preparation for MOH exams.
2. Self-improvement program for career development.
3. Availability of Jobs in different fields of Pharmacy practice.
4. Counseling for postgraduate and further studies.

In addition, Career guidance or counseling in groups is also provided regularly.

STUDENT UNION

There is a "Students' Union" consisting of members from student community elected from all years of BPharm and MPharm. Elections are held regularly at the beginning of each academic year. The Student Union serves as the principal student programming organization at DPCG. It is responsible for providing a balanced program of social, religious, recreational and cultural activities for the College, aiming to make free time activity a cooperative facet with study. The Student Union also helps to maintain close links between the College administration, faculty, and the students, which are essential for the efficient functioning of the College.

15. Glossary of Terms

Program

The set of courses and other formally established learning experiences which together lead to a qualification.

Curriculum

The term refers to a set of related courses constituting an area of specialization, such as the MPharm (Clinical Pharmacy) curriculum.

Credit hour and the credit system

Academic credit provides a basis to measure the amount of engaged learning time expected of a typical student. A credit, or credit hour, is a unit of measurement defining the student's overall effort towards attaining a qualification.

1 credit hour equals approximately 1 hour of time in class per week over a semester of 15 weeks or longer. It is assumed that a student spends two hours outside of class in independent learning or specific course assignments for every hour in class. For laboratory and case studies, 1 credit hour equals 2 hours of case discussions and lab work respectively.

Pre-requisite

It refers to each course which is found necessary for each student to complete successfully before being allowed to register for a subsequent one.

Semester

A semester is a period of time, typically a minimum of 15 weeks, during which an institution offers courses.

Course

A course consists of a number of instructional activities over a prescribed period of time. It deals with a single subject and is commonly described by title, number, credits, and expected learning outcomes.

Electives

Electives are the courses which are not compulsory for students. Electives may be free—selected by the student from any course offerings, or restricted—chosen from a pre-determined list of options. For example, students of MPharm (Clinical Pharmacy) program have to select two clinical clerkships out of five areas.

Clinical Clerkship

A course of clinical medical training in a specialty (Internal Medicine, Infectious Diseases, Pediatric care, Intensive Care, Surgery, Obstetrics & Gynecology) that usually lasts a minimum of four weeks each compulsory clerkship and minimum of two weeks elective clerkship and takes place during the third and fourth semester of MPharm (Clinical Pharmacy) program established by cooperation between college and local hospitals.

Code	Courses	Lecture	Practical	Total Units	Teaching Pedagogy										Assessment Tools														
					Lectures	Practical	Tutorial	Seminar	Computer Lab	Class Activity	PBL	Video demonstrations	Case Study	Small Group Discussion	Self-directed learning	Quizzes/CBT	OSCE	PBL assessment	Attitude & Behaviour	Case based assessment	Assignment	Presentation	Project Report/GCP	Mid Semester	Practical		Final		
																									Preceptor Evaluation	oral			
CP901	Clinical Pharmacy Practice	3	-	3	√		√			√			√	√	√	√	20	50		5	10	15							
CP902	Therapeutic Drug Monitoring	1	1	2	√		√	√	√	√			√	√		√	25					15	25						35
CP903-1	Pharmacotherapeutics-I	2	1	3			√		√	√	√	√	√	√	√	√	20		30	5			10						35
CP903-2	Pharmacotherapeutics-II	2	1	3	√		√		√	√	√	√	√	√	√	√	20		30			10	5						35
CP903-3	Pharmacotherapeutics-III	2	1	3	√		√	√		√			√	√	√	√	20			5	10	20	10						35
CP903-2	Pharmacotherapeutics-IV	2	1	3	√		√		√	√	√	√	√	√	√	√	20		30			10	5						35
CP904	Clinical Toxicology & Drug Poisoning	1	1	2	√		√			√			√			√	25			5		15	20						35
CP905	Clinical Research Methodology & Biostatistics	2	-	2	√		√	√	√					√	√		40					20	20	20					-
CPC-IM-C	Internal Medicine I			4		√							√	√	√								25	15		60			
CPC-IM-C	Internal Medicine 2			4		√							√	√	√								25	15		60			
CPC-AMB-C	Ambulatory Care			4		√																	25	15		60			
CPC-PD-C	Pediatrics			4		√							√	√	√								25	15		60			
CPC-ICM-C	Intensive Care Medicine			4		√							√	√	√								25	15		60			
CPC-S-C	Surgery			4		√							√	√	√								25	15		60			
CPC-O&G-E	Obstetrics and Gynecology			2		√							√	√	√								25	15		60			
CPC-PSY-E	Psychiatry			2		√							√	√	√								25	15		60			
CPC-ID-C	Infectious Diseases			2		√							√	√	√								25	15		60			
CPC-TDM-E	Therapeutic Drug Monitoring			2		√							√	√	√								25	15		60			
CPC-DIS-E	Drug Information Service			2		√							√	√	√								25	15		60			
CPC-TPN-E	Total Parenteral Nutrition			2		√							√	√	√								25	15		60			
CPC-CP-E	Community Pharmacy			2		√							√	√	√								25	15		60			

Clinical Clerkship & Research Project

Introduction

The primary goal of the clerkships is to provide an experiential learning environment which will assist our students to become confident, caring, with the ability to think critically and apply their knowledge and skills in the best interest of their patients regarding individualized pharmacotherapy planning, intervention and outcome evaluation.

The clerkships program is designed to guide the trainee to gain the proper understanding of pharmaceutical care concepts, to decide their choice of clinical specialty, to continue successfully in their lifelong learning and practice and to meet their responsibilities to patients and the society.

Structure

For M. Pharm in clinical pharmacy specialization, clinical clerkship is obligatory. Clinical clerkship is for 14 weeks each during third and fourth semester, during which students will be assigned primarily to clinical rotations in different hospital departments of Dubai Health Authority approved facilities. Each student's experience will include total four weeks each on Internal medicine, Infectious diseases, Pediatric care, Intensive Care, Surgery, Obstetrics & Gynecology, and two-week blocks in each area for any two of the following Selection: Psychiatry, Drug Information Service, Therapeutic Drug Monitoring, and Total Parenteral Nutrition

CLINICAL CLERKSHIP ROTATION MODULES Semester Three and Four

Clerkship (Choose any <u>three</u> areas in each semester)		Duration (Weeks)	Credit Hours
CPC-IM 1-C	Internal Medicine 1	4	4
CPC-IM 2-C	Internal Medicine 2	4	4
CPC-AMB-C	Ambulatory Care	4	4
CPC-IC-C	Critical Care/Intensive Care Medicine	4	4
CPC-PD-C	Pediatrics	4	4
CPC-SG-C	Surgery	4	4
Credit Hours			24
Electives Clerkships (Choose any <u>one</u> area in each semester)		Duration (Weeks)	Credit Hours
CPC-PSY-E	Psychiatry	2	2
CPC-OG-E	Obstetrics & Gynecology	2	2
CPC-ID-E	Infectious Diseases	2	2
CPC-TDM-E	Therapeutic Drug Monitoring	2	2

CPC-DIS-E	Drug Information Service	2	2
CPC-TPN-E	Total Parenteral Nutrition	2	2
CPC-CP-E	Community Pharmacy	2	2
Credit Hours Any TWO			4
CP-RP	Research Project & Dissertation	Min 24	6
Credit Hours (Total)			34

Role of the Affiliated Hospitals

A formal affiliation agreement between DPCG and training sites exists for the purpose of establishing a clinical training program for the MPharm (Clinical Pharmacy & Pharmacy Practice) second year students. Clinical centers and hospitals accept qualified students into organized, patient-based teaching programs and provide additional instruction with pertinent lectures, conferences, ward rounds and seminars. The college budgets a specified sum of money to help defray the expenses incurred in running the teaching program at each hospital; provides professional liability insurance coverage for all its students working in any of its affiliated hospitals; ensures that all students fulfill health care requirements required by hospitals; and only assigns students to hospitals with academic qualifications consonant with the demands of the clinical program provided by the hospital. All hospitals have been carefully selected to ensure their facilities meet DPC's standards. They must demonstrate a continuing commitment to medical education and furnish the necessary infrastructure to provide a successful clinical training program: integrating medical students into the health care team, providing access to the library and other ancillary facilities and supervising involvement with patients.

Training sites

- Rashid Hospital, Dubai (MOU)
- Latifa Hospital, Dubai (MOU)
- Saudi German Hospital (MOU with Dubai)
- Fakeeh University Hospital, Dubai (MOU)
- Al Jalila Children's Hospital DHA
- Cleveland Hospital, Abu Dhabi (MOU)
- Iranian Hospital (MOU)
- The following EHS hospitals are also included as training sites with a formal approval from the Ministry of Health & Prevention.
- Al Qassimi Hospital, Sharjah
- Fujairah Hospital, Fujairah
- Al Baraha Hospital, Dubai
- Applicants from military staff are allowed to pursue their clinical clerkship in Zayed Military Hospital.

Supervision of the Clerkships

DPC has a formal administrative and academic structure for conducting its clinical program at affiliated hospitals. DPC appoints a clerkship supervisor (from Clinical faculty of DPC) oversees the scheduling of rotations, delineates holidays and vacation time, administers examinations provided by DPC, and

determines the scope of student activities, deals with student concerns. The clinical supervisor reviews the overall clerkship program with a program director at the time of their visits to the hospital.

Role of Preceptors in Clinical Clerkship

The teaching cornerstone of the core rotation is the close relationship between the student and the attending preceptors. Preceptors are nominated by the hospitals based on their experience and leadership qualities. Generally, a senior pharmacist with a minimum of 5 years of experience is acceptable to be a preceptor as a requirement by the college. The student preceptor ratio will be maintained as 1:3. Many hours per week are spent in small group discussions involving students and their clinical preceptors as they do ward rounds. Together, they discuss the patient's diagnosis, treatment and progress.

1. Orient student to site, policies, and procedures
2. Facilitate informal, collaborative, respectful learning environment.
3. Be a positive and effective role model.
4. Provide learning experiences with appropriate patients.
5. Provide on-going feedback.
6. Pace learning experiences to meet student needs.
7. Direct student to resources, readings
8. Notify faculty of concerns about student's behavior, work, or progression
9. Provide evaluation data to clerkship supervisor.

Description of Activities:

Each Student must select a minimum of three compulsory and one elective clerkship in each semester (Semester 3 & 4). The students should attend the clerkships in rotation. Each student has to attend 4 weeks of compulsory and 2 weeks of elective clerkship in rotation.

The student has to report to the preceptor (pharmacist) of their respective area of clerkship. The students are expected to become active members of the team. The students will be monitored by the Clinical teaching staff assigned by the DPC. During the four-week rotations students are required to actively participate in patient care as outlined below:

1. Attend rounds with assigned medical team.
2. Monitor patients assigned by preceptor. In this regard you will be required to maintain a patient specific document to record patient database information, drug therapy problems, vital monitoring parameters, recommendations, and follow-up.
3. Meet with preceptor daily for discussion session that may include:
 - a. Giving informal oral presentations of assigned patients to preceptor and fellow students.
 - b. Provide daily update to preceptor and fellow students on patients they are following.
 - c. Discusses/complete reading material assigned previously by preceptor.
4. Conduct at least 2 patient interviews during the rotation.
5. Students must report a minimum of 5 cases and 3 cases in each compulsory and elective clerkship rotation respectively.
6. Supply drug information question assigned by preceptor. (Don't offer any information to medical team that requires interpretation or judgment without first reviewing your response with your preceptor).

Grading Policy: Clerkship is evaluated based on clerkship evaluation (continuous) and final evaluation (case presentation and written report) with 60% and 40% marks respectively (see the evaluation forms). Students must obtain at least 70% marks in each clerkship. Students who fail to secure at least 70% marks in clerkships have to repeat the respective clerkship during the next six months. If the student again fails to secure at least 70% marks in clerkship, she will be withdrawn from the college.

Rules of Training:

Attendance: Attendance of this course is compulsory. Students must compensate all missed work during absence.

Professional Demeanor: Professional conduct must be maintained appropriately.

- Students should wear a clean white lab coat with a badge at all times to prove that the student follows Dubai Pharmacy College for Girls.
- Pants and open skirts are not allowed.
- Comfortable shoes are preferred.

Confidentiality and Working with Patient's Records

- The patient's medical record is a personal file which is to be properly respected and kept confident at all times. Under no circumstances should information about a patient be discussed outside the hospital with anyone than fellow health professionals.
- Charts are to be reviewed in their assigned area (patient care unit or medical record department) and are not to be removed from the location.
- When utilizing charts please return the chart back to their proper storage area (chart rack on wards and appropriate personnel in medical record).
- The patient charts are very often utilized by health care providers and must be given to them when needed, e.g., when the patient is going for x-ray, the chart must accompany him. Please do not write in any section of the chart, but if you have any concerns communicate to your preceptor.

Courtesy

- Participation in the rounds and clinics is conducted for the purpose of reviewing patient's care and teaching students. Good behavior is required during rounds and clinic. Questions concerning patient cases should be postponed until after the case presentation of the patient.
- Common rules of courtesy should be observed in dealing with Students should deal with all employees (nurses, receptionists, housekeepers, and other personnel) of the hospitals and clinics with respect.
- Reviewing patient charts should not interfere with the normal care and medical work-up scheduled for the patient.

Immunization and Health Insurance

- Immunization for the students is preferred as per the requirement of the hospital for health care professionals in UAE. All the students have health insurance and is renewed every year as the active health insurance and health checkup is mandatory for visa renewal.

- Policies and procedures concerning blood borne pathogen exposures and exposures to communicable diseases are addressed during the orientation sessions for students. In addition, these policies are reinforced during the Surgery and Internal Medicine clerkships.
- In the event that the student contracts a communicable disease which potentially poses a risk to patients or co-workers (e.g., tuberculosis, varicella), steps will be taken to prevent dissemination in accordance with Student Health, Public Health and/or CDC protocols. Certain communicable diseases may also be reported to county or state health authorities, as required by law.

Student Safety & Precautions

When providing patient care, regardless of the real or perceived communicable disease status of the patient, all students and staff should follow Standard Universal Precautions:

- Wash hands before and after ward rounds/patient contact, according to hospital policy, even if gloves are used.
- Wear gowns and gloves when exposure to blood, body fluids, excretions or secretions is likely.
- Use gloves appropriately according to aseptic and/or sterile techniques.
- Never recap needles or scapel blades by hand.

COURSE DESCRIPTION

Course Code:	CPC-IM-C
Course Title:	Pharmacotherapy in Internal Medicine-1 & 2
Duration	4 weeks (4 CH)
Working Hours	5 hrs/day
Prerequisite:	Pharmacotherapy I
<p><u>Course Description:</u></p> <p>The purpose of this rotation is to provide training to the students in clerking cases in the Department of Internal Medicine. Vital to this is the mandatory participation in the ward rounds with the internists on a daily basis for duration of time assigned to this department. The focus must be on each case markers namely, patient details, lab data, medication regimen and the associated rationale of therapy. The students must anticipate that each and every case will present with some issues to be dealt with in terms of the medication regimen.</p> <p>A total of stated cases must be clerked and the same must be disseminated to the class in the form of presentations / group discussions on a weekly basis. The students must select a particular case for the final exam presentation.</p> <p>Subject Objectives</p> <p>The objectives of this clerkship for the students are to:</p> <ul style="list-style-type: none"> • Participate and involve in the ward rounds with the internists (physician specializing in internal medicine). • Carefully and efficiently clerk the cases assigned to them. • Follow closely all aspects of each patient's care, and should be up to date on the patient's clinical status, lab data, medications, etc. • Actively participate in discussions with the internists about each specific case on-site. 	

Course Code:	CP-PD-C
Course Title:	Pharmacotherapy in Paediatric Care
Duration	4 weeks (4CH)
Prerequisite:	Pharmacotherapeutics II
<p>Course Description</p> <p>The purpose of this rotation is to provide training in pediatric medicine and infant care. Students will participate in the direct primary care of the infant and children in the hospital while supervised and supported by an interdisciplinary faculty consisting of physicians, nurses, and pharmacists.</p> <p>Subject Objectives</p> <p>The objectives of this clerkship for the students are to:</p> <ul style="list-style-type: none"> •Define different age groups within the pediatric population. •Explain general pharmacokinetic & pharmacodynamic differences in pediatric versus adult patients. •Identify factors that affect selection of safe and effective drug therapy in pediatric patients. •Identify strategies for appropriate medication administration to infant and young children. 	

Course Code:	CP-IC-C
Course Title:	Pharmacotherapy in Intensive care
Duration	4 weeks (4CH)
Prerequisite:	Pharmacotherapeutics I & II
<p>Course Description</p> <p>Students will be exposed to critically ill unstable patients for whom the common pathway of resuscitation will apply. Procedural skills will vary depending on which unit students rotate through, but basic procedural skills will be obtained in any units they are placed to. Other common pharmacotherapy intervention will vary depending on unit specialty.</p> <p>Subject Objectives</p> <p>The objectives of this clerkship for the students are to:</p> <ul style="list-style-type: none"> •Understand the fundamental principles of overall management of cases in the intensive care unit: •Recognize conditions when a patient has a life-threatening illness and needs intensive monitoring and care in an ICU setting •Learn Basic tenets of pharmacotherapeutic aspects of stabilization of an unstable patient •Understanding of a thorough differential diagnosis for patients with life threatening conditions 	

Course Code:	CP-S-C
Course Title:	Pharmacotherapy in Surgery
Duration	4 weeks (4CH)
Prerequisite:	Pharmacotherapeutics I & II
<p>Course Description</p> <p>The objectives of this clerkship for the students are to provide exposure to an intense clinical experience that introduces students to the basic principles of surgery. The clerkship is designed to equip students with the knowledge and skills relevant to surgical management that all students should possess. In addition, it aims to emphasize teamwork, patient responsibility, and professional behavior as essential qualities to develop.</p>	

Pharmacotherapeutic aspects of surgery are also given due emphasis in the clerkship.

Course Code:	CP-OG-E
Course Title:	Pharmacotherapy in Obstetrics & Gynaecology
Duration	2 weeks (2CH)
Prerequisite:	Pharmacotherapeutics I & II
<p>Course Description</p> <p>As part of clerkship experience, students will have the opportunity to be involved with inpatient, outpatient and on-call duties of obstetrics and gynecology practices.</p> <p>Formal and informal daily teaching sessions and rounds with the faculty and resident staff are an integral part of the training. The Problem Based Learning System is used in the training held at the assigned hospitals. Those sessions are constructed so as to cover the Obstetrics and Gynecology Care objectives under the guidance of preceptors.</p> <p>Subject Objectives</p> <p>The objectives of this clerkship for the students are to learn the course of normal and abnormal labor, normal and complicated deliveries, care of newborn infants in the delivery room, and the clinical management of patients with gynecologic disorders.</p> <p>Although a portion of learning will be derived from observation, the bulk will result from direct experience in outpatient clinics, the operating room and "on the deck" of labor and delivery. There is also a significant didactic learning component that includes a series of lectures, conferences and teaching rounds.</p>	

Course Code:	CP-ID-E
Course Title:	Pharmacotherapy in Infectious Disease
Duration	2 weeks (2CH)
Prerequisite:	Pharmacotherapeutics II
<p>Course Description</p> <p>This clerkship will provide a broad overview or introduction to the treatment and management of infectious diseases. The focus will be on common infections seen in community and hospital settings, principles of microbiology and infectious diseases, antimicrobial use, and antimicrobial stewardship. The broad unit objectives are for students to develop and apply infectious diseases and antimicrobial use knowledge and skills in the care of patients, especially those with infections. These may be patients in the community or hospital settings. The knowledge and skills developed will be at a general level rather than at the level required for a specialist infectious diseases pharmacist.</p> <p>Subject Objectives</p> <p>The objectives of this clerkship for the students are to:</p> <ul style="list-style-type: none"> • introduce to a range of topics relevant to the optimal use of anti-infectives and the management of patients with infections. • manage patients requiring anti-infective therapies, and the use anti-infectives in-general. • develop critical thinking, communication and problem-solving skills, with a focus on infectious diseases and their treatment related topics. 	

Course Code:	CPC-PSY-E
Course Title:	Pharmacotherapy in Psychiatry
Duration	2 weeks (2 CH)
Working Hours	5 hrs/day
Prerequisite:	Pharmacotherapy III
Course Synopsis This clinical experience will provide students with a solid foundation in the fundamentals of the evaluation, diagnosis, treatment, and appropriate referral of patients with mental health disorders. Students will be exposed to all major psychiatric diagnostic categories including affective disorders, anxiety disorders, psychotic disorders, alcohol and substance abuse disorders, geriatrics disorders, children and adolescent disorders, somatization disorders, oppositional defiant disorder, autism, pervasive developmental disorder, and personality disorders.	

Course Code:	CPC-TDM-E
Course Title:	Pharmacotherapy in Therapeutic Drug Monitoring
Duration	2 weeks (2CH)
Working Hours	5 hrs/day
Prerequisite:	Clinical Pharmacokinetics
Course Synopsis The purpose of this rotation is to provide training to the students in Therapeutic Drug Monitoring. Therapeutic drug monitoring is an essential component of the pharmacist's responsibility, and a critical part of the drug use process. Accurate monitoring insures appropriate and cost-effective pharmaceutical care for all patients. Focus is placed on familiarizing with the various factors affecting TDM and the subsequent calculations of the medications to be administered. Therapeutic drug monitoring involves the maintenance, modification, or discontinuation of a drug based on its efficacy, therapeutic activity, adverse effect profile, and patient response.	

Course Code:	CPC-DIS-E
Course Title:	Pharmacotherapy in Drug Information Service
Duration	2 weeks (2 CH)
Working Hours	5 hrs/day
Prerequisite:	Clinical Pharmacy Practice
Course Synopsis As part of this clerkship experience, students will have the opportunity to be involved in receiving calls from the physicians or patients or any other health care professionals and provide response to their queries. The aim of the DPIC internship is to deliver the students with experience in providing authenticated and updated drug and poison information services to the physicians or patients.	

Course Code:	CPC-TPN-E
Course Title:	Pharmacotherapy in Total Parenteral Nutrition
Duration	2 weeks (2CH)

Working Hours	5 hrs/day
Prerequisite:	Clinical Pharmacy Practice
Course Synopsis The purpose of this rotation is to provide training in Total Parenteral Nutrition, administration and calculation. Students will participate and focus on the cases (patients) whose conditions require the administration of TPN. Further to this, they will be required to look at various issues in this context like the TPN-specific calculations, incompatibility issues and the like.	

Course Code:	CPC-AC-E
Course Title:	Ambulatory care/ Community Pharmacy
Duration	2 weeks (2CH)
Working Hours	5 hrs/day
Prerequisite:	Clinical Pharmacy Practice
Course Synopsis The Ambulatory Care Clerkship introduces the student to outpatient medicine. The goal is for students to become familiar with practicing medicine in the outpatient setting. Students will integrate their knowledge of therapeutics and pathophysiology to effectively provide pharmaceutical care in an ambulatory patient care environment while a licensed preceptor supervises them.	

Graduation Project for M.Pharm (Clinical Pharmacy):

After successful completion of didactic courses in year one in Dubai Pharmacy College for Girls (DPCG), Students are required to go for clinical clerkship rotation in Hospitals in Year two. During their training, students are required to conduct a minor research project for a minimum of 12 weeks in clinical, hospital or community related topics. All the senior academic staff of Clinical Pharmacy and Pharmacy Practice unit will be involved in supervising the M. Pharm Clinical pharmacy postgraduate students in their research as part of the curriculum. Students are required to prepare a proposal for their research/review topic. If the project involves interaction with the patients or patient data, then they are required to apply for institutional ethical approval in DPC. They are also required to get an approval from DHA/MoH, if the data collection site is in DHA/MOH hospitals. Students utilize hospital databases and library databases to conduct the research/reviews. Students have to submit the report at the end of Clerkship training and have to do final presentation of the research/systemic reviews to fulfill the requirement of Master of Pharmacy (clinical pharmacy) program.

Upon successful completion of the research project during the second year of the programme, candidates will be able to demonstrate:

1. An aptitude for research and will be equipped to undertake (under supervision) focused research in a field of their choosing.
2. Several generic competencies that are required of postgraduates including being able to:
 - formulate meaningful and relevant research questions.
 - formulate testable research hypothesis.
 - design a study to test this hypothesis.
 - prepare drafts of research protocols that will be peer reviewed.

- carry out research under supervision adhering to guidelines laid down by professional societies.
 - write results of their research in their own words, providing appropriate references to sources of ideas and information
 - communicate results of their research to a professional audience; and
3. An aptitude for continuous professional development.

The evaluation process of the will be as follow:

- **Research & Report (60%),**
- **Presentation & viva voce (40%)**

Report & Presentation:

- The candidate is expected to present his/her research project/systemic review report under the following headings to the supervisor and an internal examiner/representative appointed by the Dean, Dubai Pharmacy College for Girls (DPCG):
- Background (motivation for this work); hypothesis (if appropriate); objectives; methods; summary of results; limitations of the present study; conclusions and references.
- The examiner should be provided with a pre specified semi-structured assessment scheme for evaluating the students' performance. The viva-voce should be moderated by the internal examiner. Successful defence of report is required for the candidate to be declared as passed.